

Business Application Continuity

CA ARCserve® Backup

CA ARCserve® D2D

CA ARCserve® Replication and High Availability

Tamas.Jung@ca.com

CEE RMDM Technical Sales

ca Forum

Bratislava
20. október

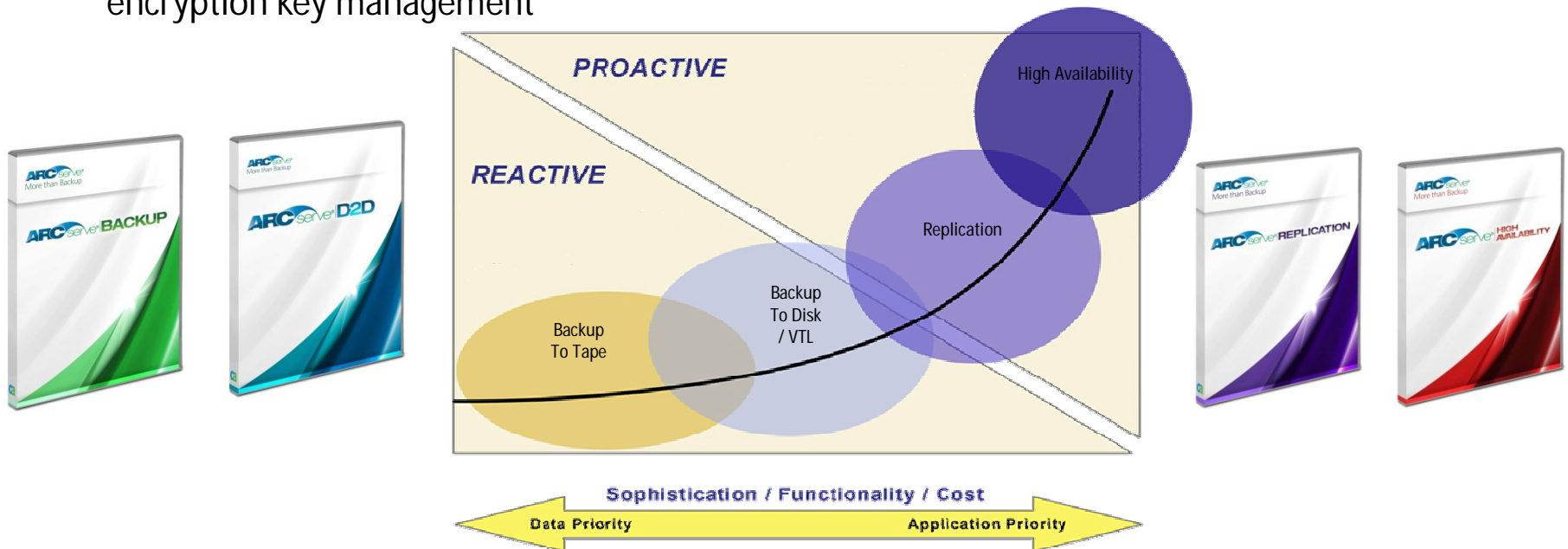
CA Recovery Management R 15

—Total protection & reliable recovery

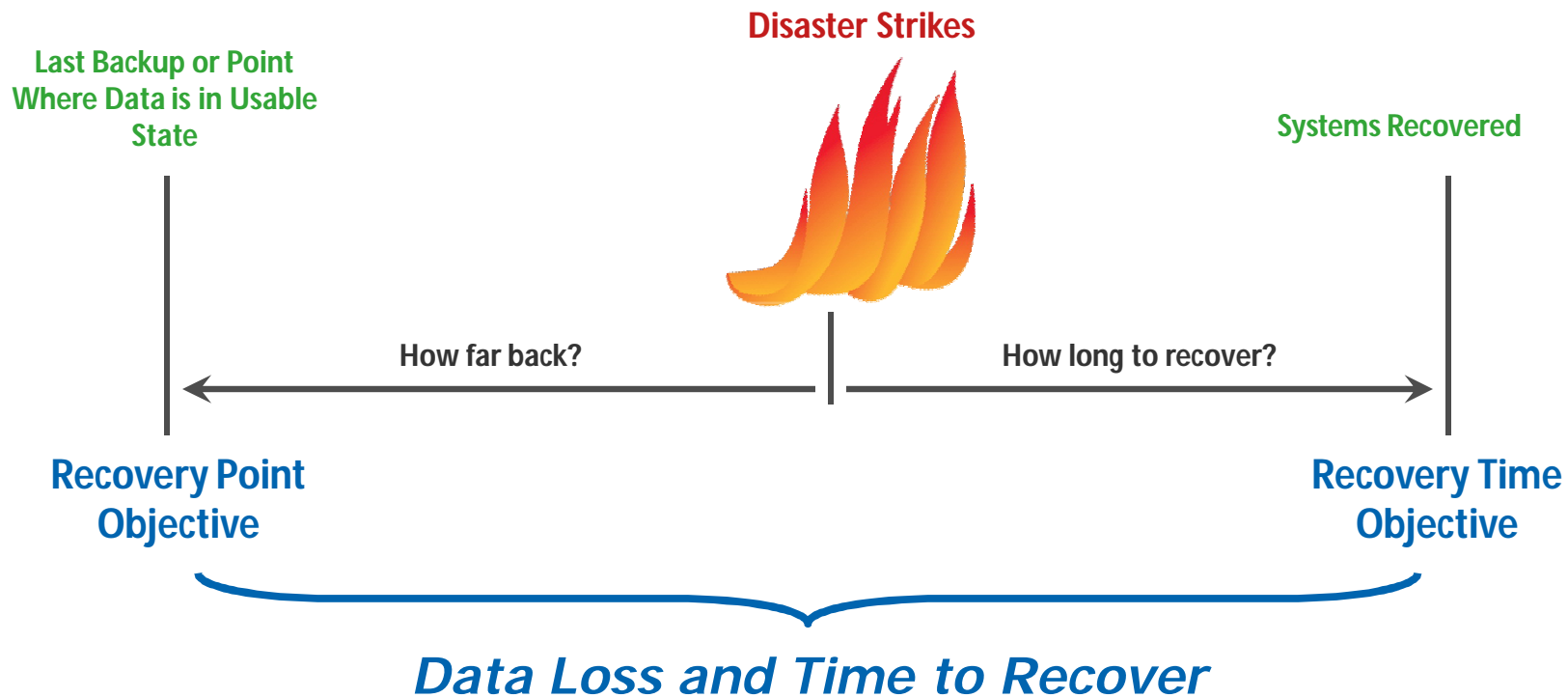
- Integrated backup, replication and automated application failover

—Unequaled ROI

- Built-in Bare Metal Recovery, DR testing, VTL, de-duplication, backup reporting, SRM and encryption key management



Focusing on RPO & RTO



—Common Challenges:

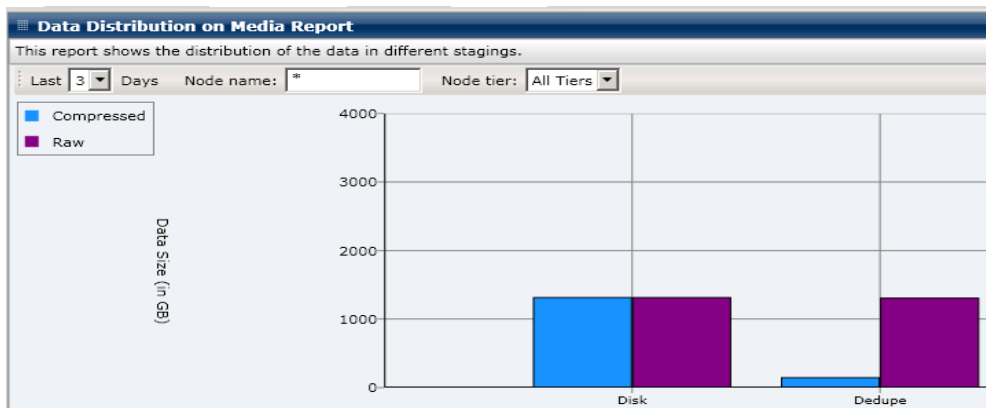
- Data loss of more than 24 Hours?
- Recovery Time greater than 4 Hours?

Addressing Customer Challenges

- **Restore** from backups can take **too long**, affecting recovery time and service level agreements (SLAs)
- Periodic backups do not provide continuous data protection and don't always support **recovery point objectives** (RPO)
- Backup and restore does not provide system, application and data **high availability**
- High availability is becoming a critical component of every **disaster recovery strategy**

Data Deduplication

- Built-In at no additional cost
- Up to 95%+ data reduction
- Helps RTO
 - Retain more recovery points
- De-duplication across servers
- Uses commodity hardware

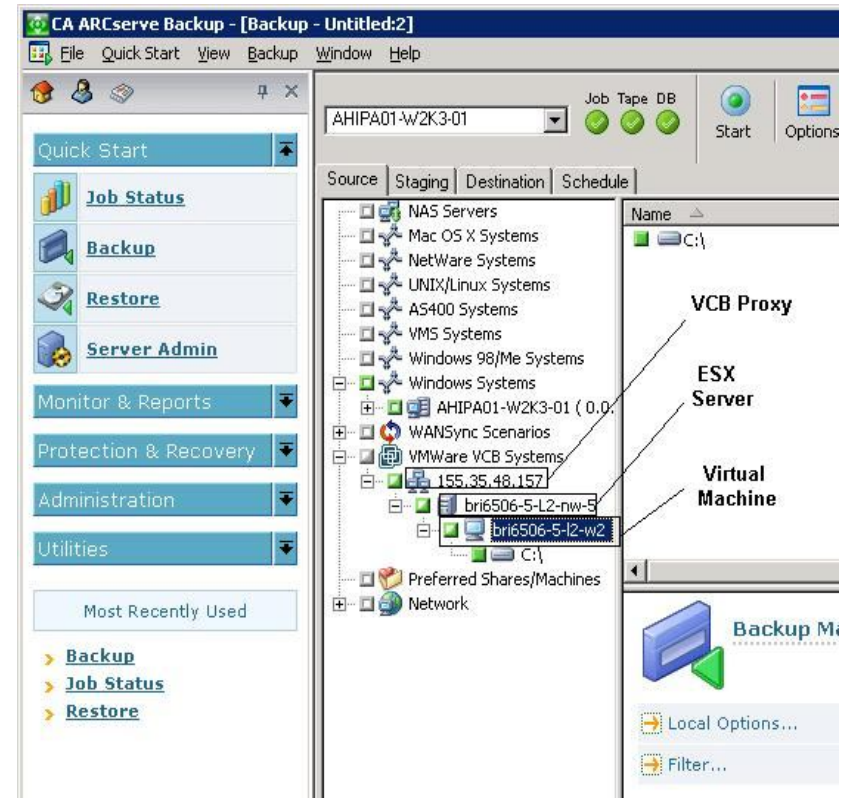


Data

plication

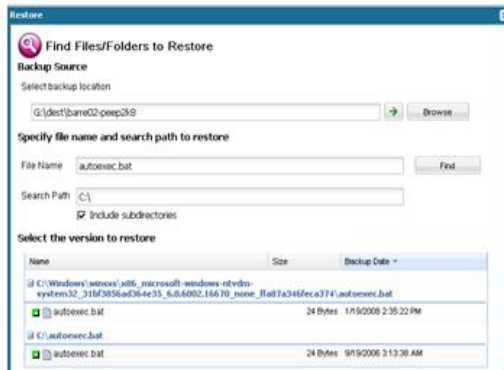
Virtualization Support

- Single solution for physical and virtual servers to reduce cost and complexity
- MS Hyper-V & VMware vSphere
 - Discovery of VMs
 - Backup VMs over SAN/LAN
 - Incremental / differential backups
 - Direct from tape/disk restores
 - No proxy staging needed
 - Direct to tape/disk backup
 - No proxy staging needed
 - vStorage integration (VDDK support)

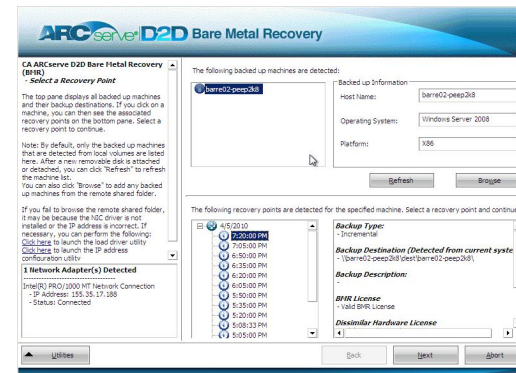


Snapshot Backup with 4 Restore Types

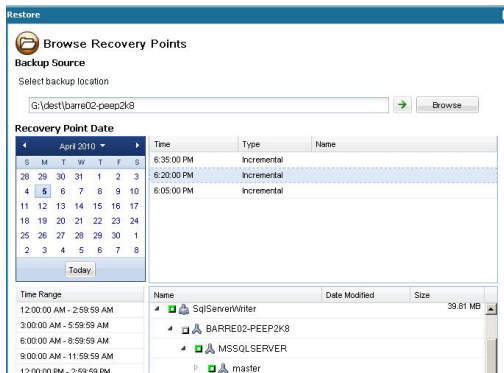
FILE\FOLDER LEVEL RESTORE



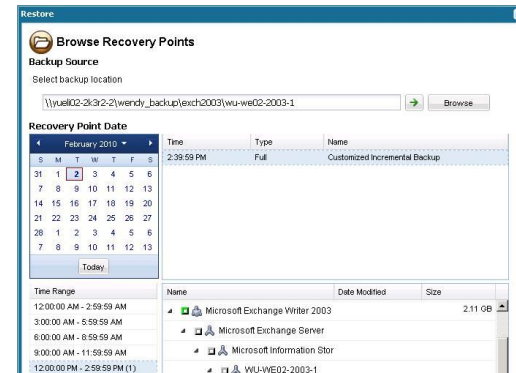
BARE METAL RECOVERY



SQL RESTORE



EXCHANGE RESTORE



Bare Metal Restore - Physical to Physical or Virtual

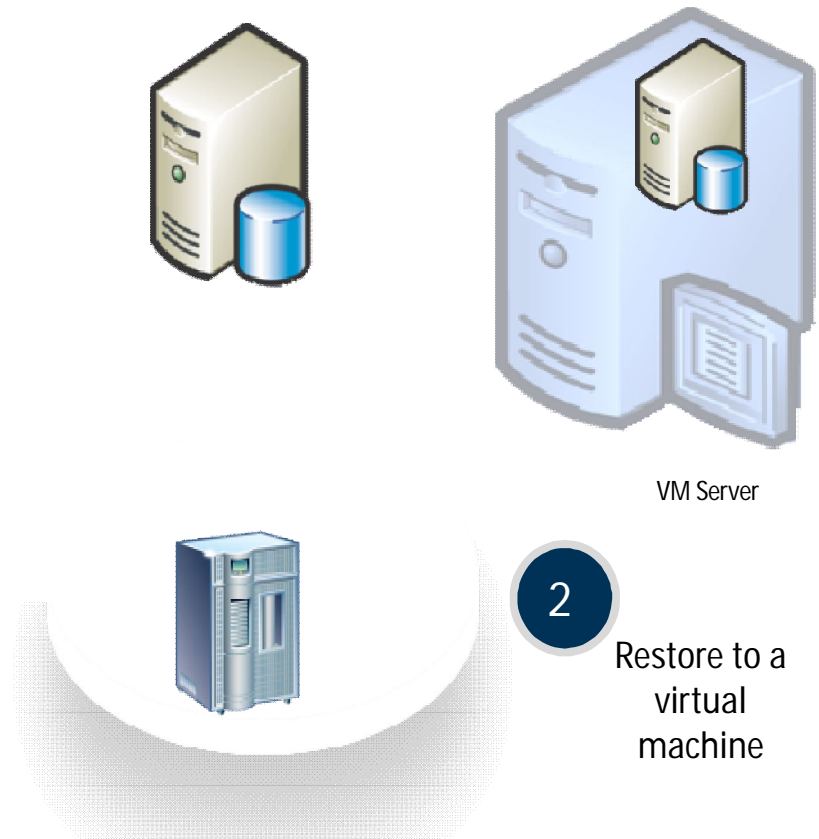
—Reduces business service downtime

- Gain time to fix hardware issues

—Restore process:

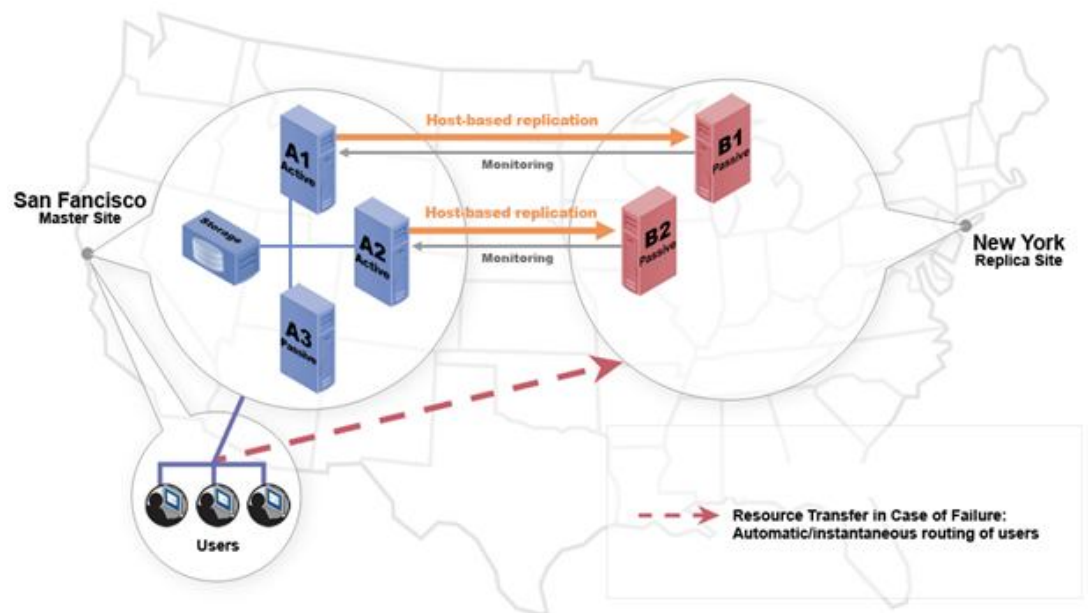
- Backup any physical server including MExchange- and MSSQL-servers
- On failure, provision a virtual server
- Restore the physical server to virtual using ARCserve D2D BMR

1



The CA ARCserve Replication Environment

- Physical to Physical (can be multi-proc to single proc even)
- Physical ↔ Virtual (VMware, MS Hyper-V) ↔ Cluster
- Storage type agnostic:
 - DAS
 - Fiber
 - iSCSI
- Configuration scenarios:
 - One to one, One to many
 - Many to one
 - Daisy chain



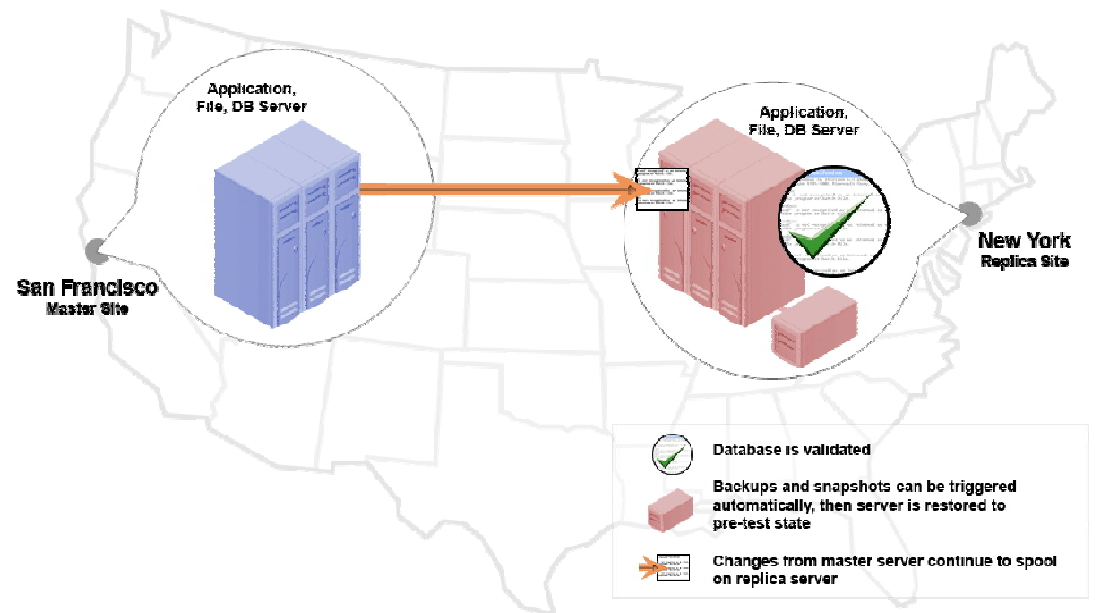
IT Business Continuity with CA ARCserve HA

—Host based continuous data protection (CDP) and replication combined with intelligent failover at the application level

- Keep your critical applications always available
- Anytime disaster recovery testing
- Data roll back to any point in time
- Wide area network support
- Windows, Unix & Linux

—Solutions

- CA ARCserve High Availability
 - Assured Recovery



Application and Platform Coverage

Application Level Support

MS Exchange

MS SharePoint

MS SQL Server

MS Dynamics CRM

MS IIS

Oracle Server

Blackberry

vCenter

File Server

Custom Solutions

Supported Operating Systems

Windows Server

Windows Clustering

Solaris

SunOS

AIX

Red Hat Linux

SuSE Linux

Virtualization Support

Hyper-V Hosts

Hyper-V, VMware VI and vSphere, Citrix XenServer guests

Full-system P2V and V2V

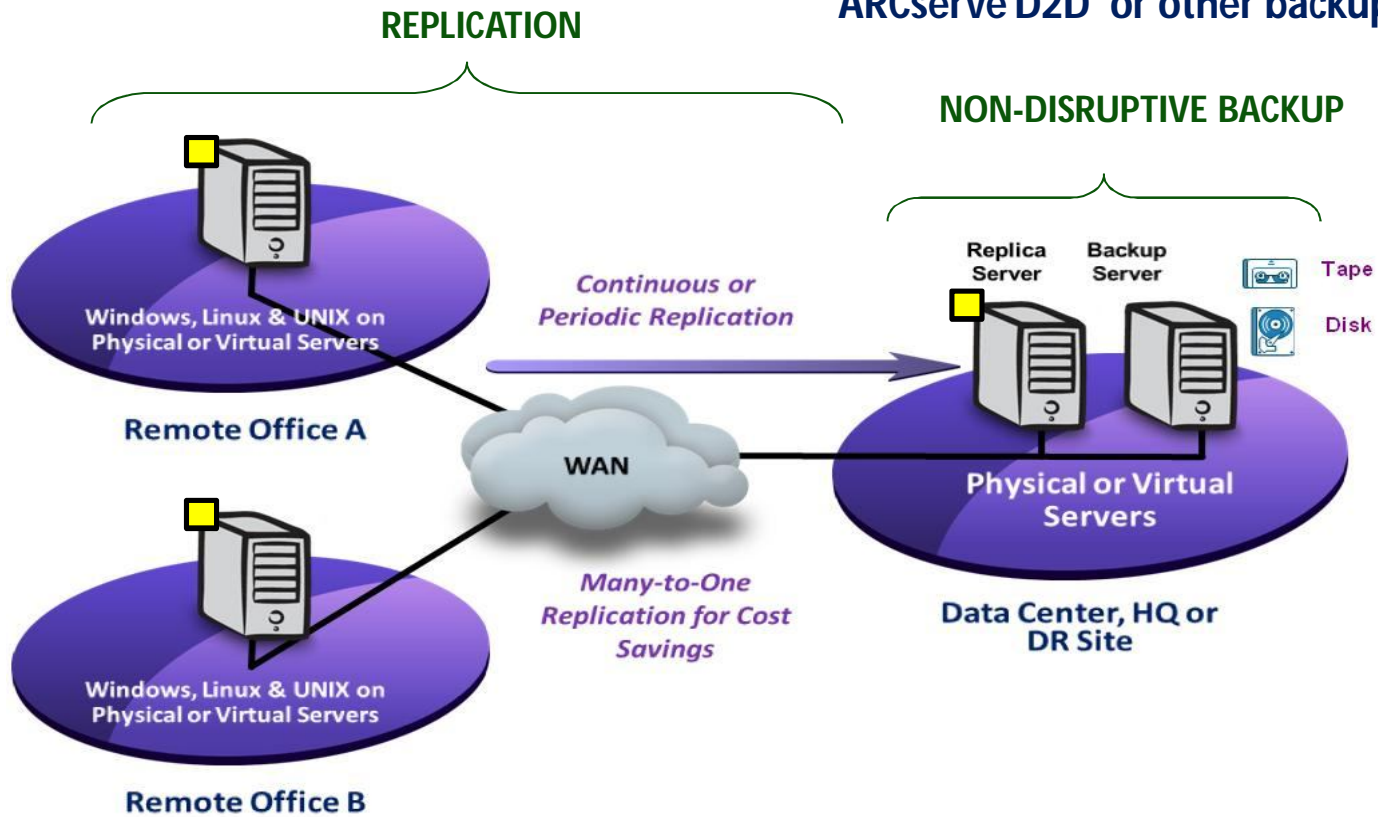
Hardware independent server-level x2x

Remote Office Data Protection

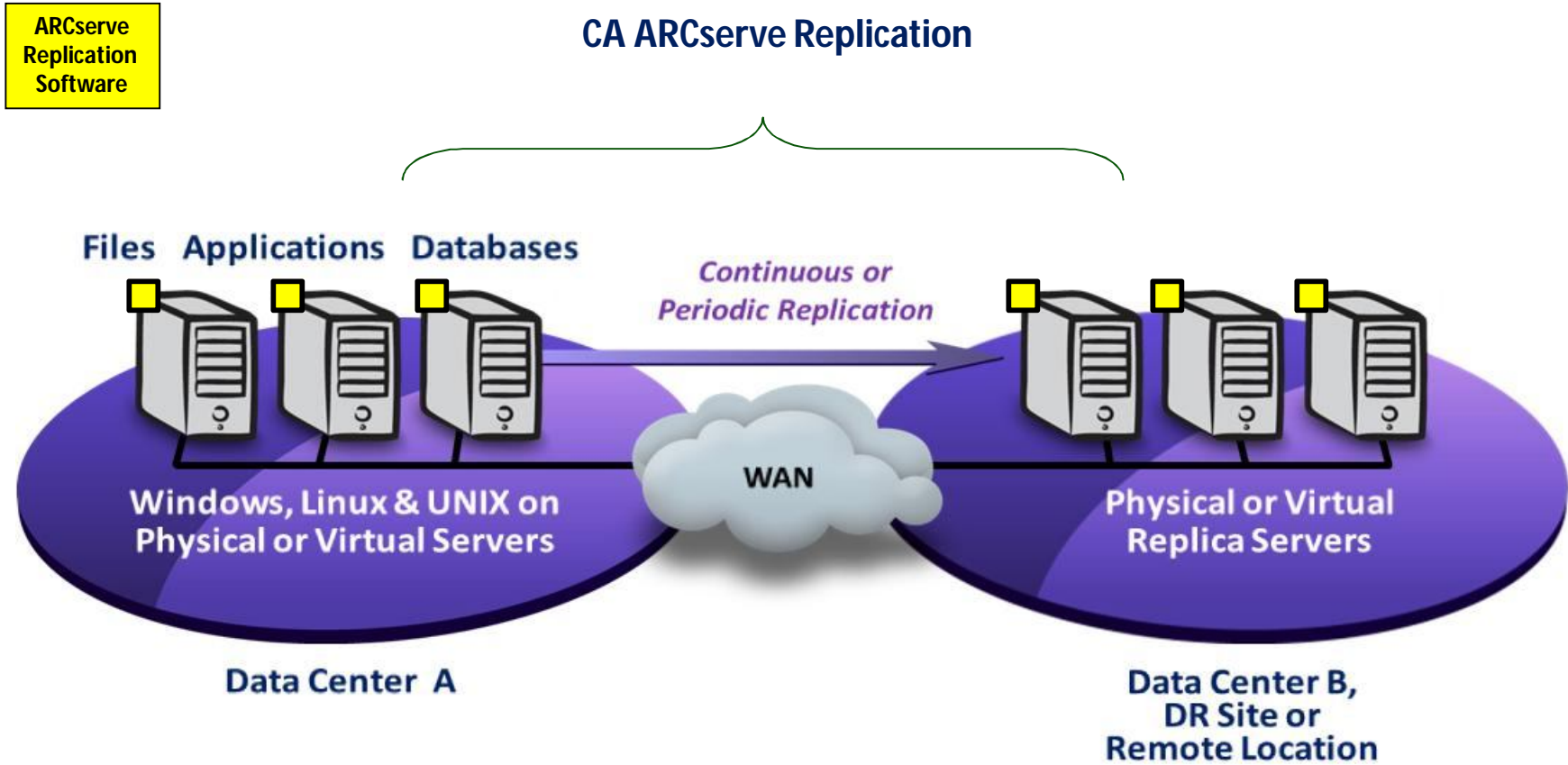
ARCserve
Replication
Software

CA ARCserve Replication

CA ARCserve Backup, CA ARCserve D2D or other backup



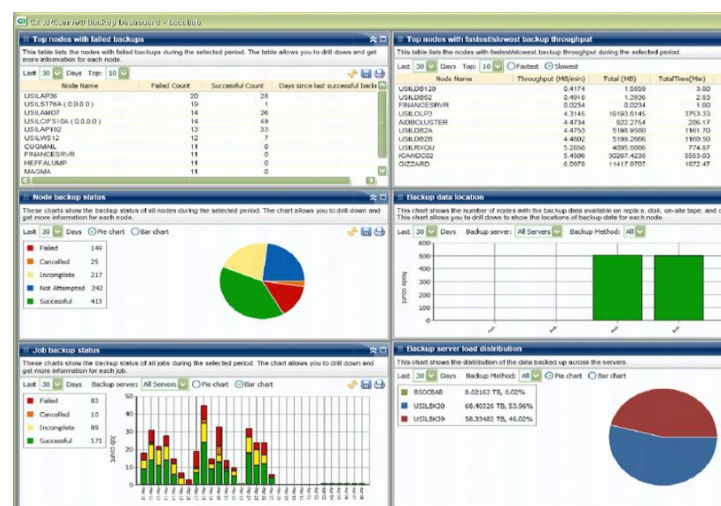
Remote Disaster Recovery



Storage Resource Management

—CA ARCserve Backup Global Dashboard

- Backup status & recovery points
- Server resources
 - OS & Application versioning
 - Disk & volume utilization
 - CPU & RAM utilization
 - NIC, SCSI & Fibre
- Virtualization information & protection status
- Media & encryption information
- De-duplication usage



—Enables storage planning, problem avoidance, fast troubleshooting and backup load balancing

CA RM Advantages

Advantage	Differentiator
Deduplication capability	Only CA ARCserve Backup provides data deduplication capabilities on arbitrary hardware at no additional cost .
Snapshot-based BMR (Bare Metal Recovery)	Only CA ARCserve D2D can restore files/folders, volumes, applications and whole Windows servers from one single VSS-snapshot backup.
Total Data Protection	Only CA ARCserve Replication is integrated with CA ARCserve Backup to quickly and easily protect data centers and remote offices. It also works with CA ARCserve D2D and any other backup solution.
Multi-platform Application HA support	Only CA ARCserve High Availability provides high availability for Windows, Linux and UNIX environments – all managed through a unified, self-protecting management console to maximize system uptime.

thank you

Ca Forum | Bratislava
20. október