

CA information security update

Pavel Marták, CISSP

14.10.2010

ca Forum

Bratislava
20. október

Agenda

- Arcot
- Identity Lifecycle Management update
- ELM update
- AccessControl update

Arcot

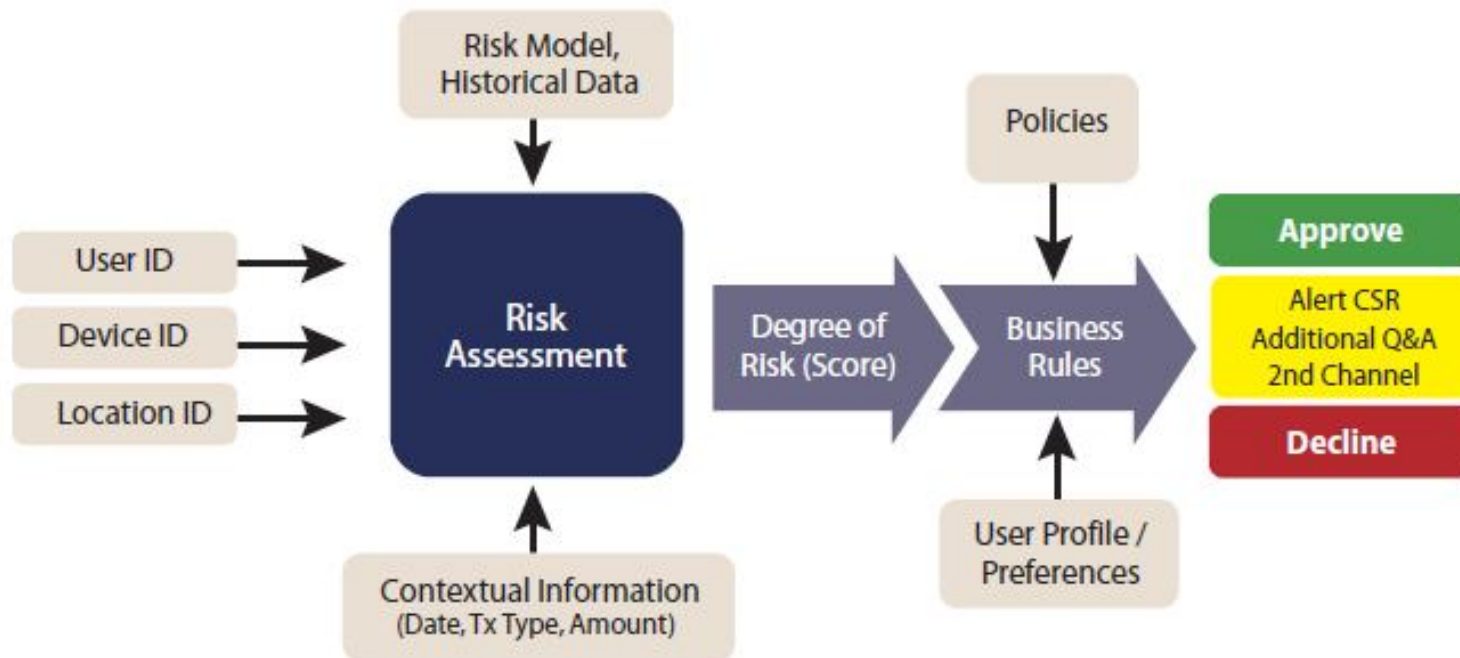
Arcot

— Acquisition

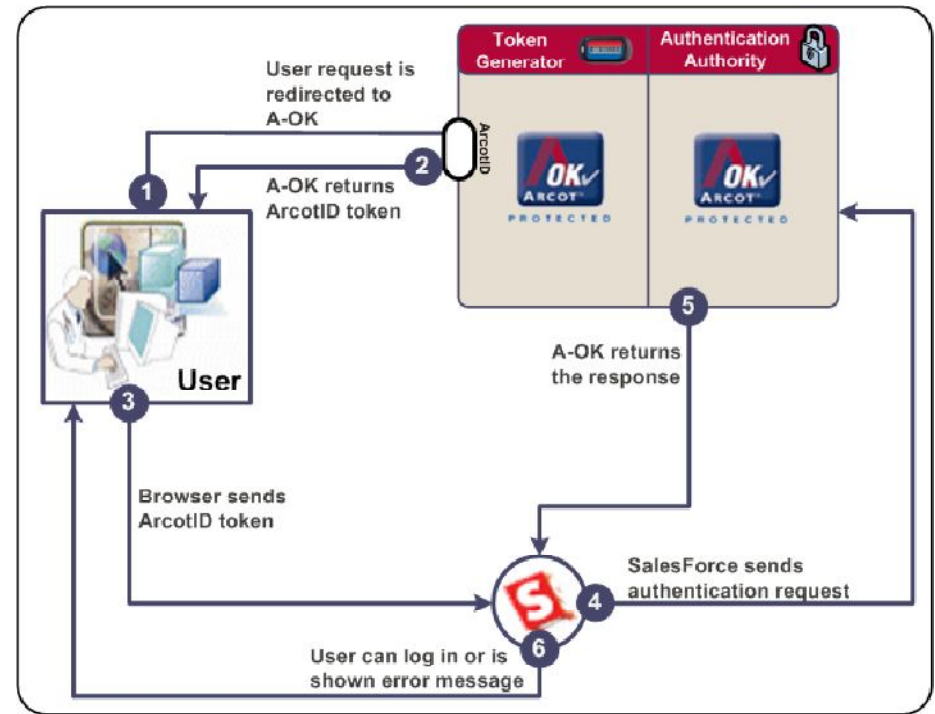
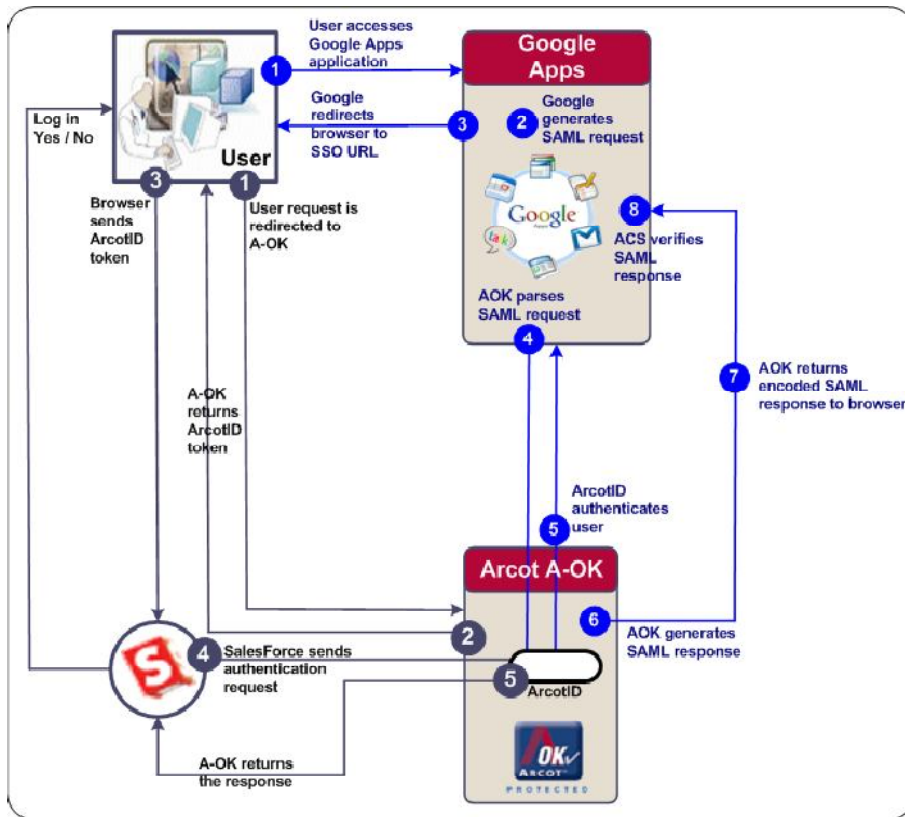
- **ArcotID** provides a unique and patented file-based software approach to the protection of the private key of a Public Key Infrastructure (PKI) key pair
- **WebFort** is solution's authentication server providing complete authentication solution – can support PKI, OTP, RADIUS or SAML
- **SignFort** - Arcot signing and authentication technology is embedded in Adobe® Acrobat® and Reader®.

Arcot - RiskFort

- Defense against on-line fraud
- Uses statistical techniques, such as Bayesian modeling, to compare each transaction against a scoring formula.
- RiskFort periodically updates the formula, based on recent fraud and transaction data.



Arcot – A-OK cloud authentication

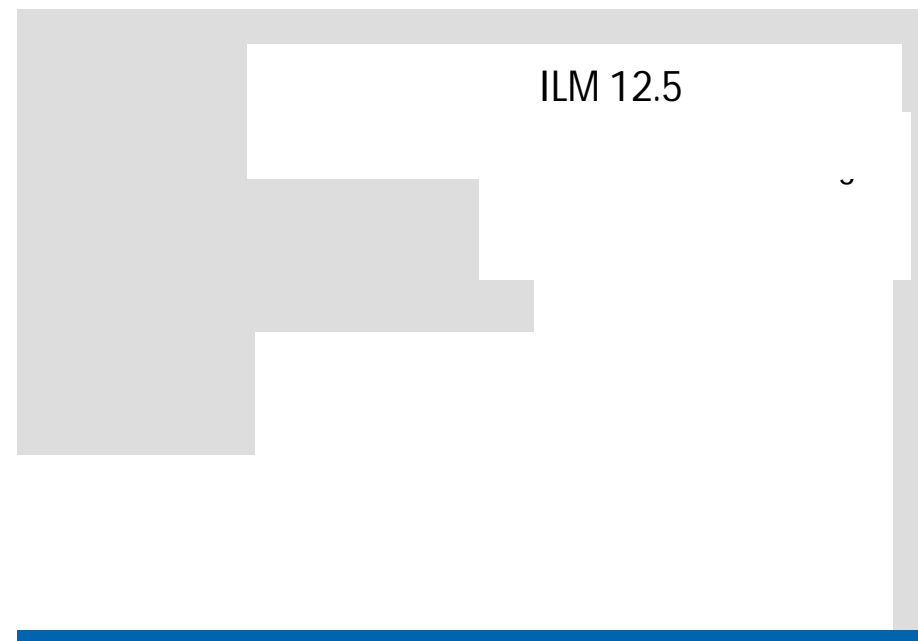


Identity Lifecycle Management update

ILM evolution

Enabling the next generation of Identity Lifecycle Management

- Embedding real-time identity analytics to supplement process automation with advanced decision support
- Further enhancing automated ILM processes with:
 - Compliance policy checking
 - Role analytics
- Sample use cases:
 - Preventative compliance
 - Out-of-pattern alerting
 - Suggested roles



Preventative Identity policies

Proactive Check/Control of SoD violation

— Value for client

- Policies are provided before the task is executed – preventative measure
- Allows to authorized business user to check the employee assignment against business SOD rules proactively
- Activities based on positive violation check
 - Accept
 - Reject
 - Warning with policy-based workflow process triggering

Smart provisioning enhancement

Reducing the time of the business approval process during the provisioning.

— Value for client

- Authorized business user can ask for recommended roles based of the user profile/attributes
- Can be based on the current position and/or other team member roles based on direct communication with RCM

Profile	Access Roles	Admin Roles	Provisioning Roles	Accounts	Groups
<input checked="" type="checkbox"/> Member	▲ Role Name	Role Description	Comments		
<input checked="" type="checkbox"/>	ForwardIncADExchange	Basic AD & Exchange capabilities	Required for Insurance users		
<input checked="" type="checkbox"/>	ForwardIncAsiaPacificSalesCorporate	Asia Pacific Sales Corporate Role			
<input checked="" type="checkbox"/>	ForwardIncInvestments	Access to investment products	IT users are excluded		
<input checked="" type="checkbox"/>	ForwardIncNorthAmericaSalesCorporate	North America Sales Corporate Role			
<input checked="" type="checkbox"/>	ForwardIncPreSales	Pre-sales Account Role			

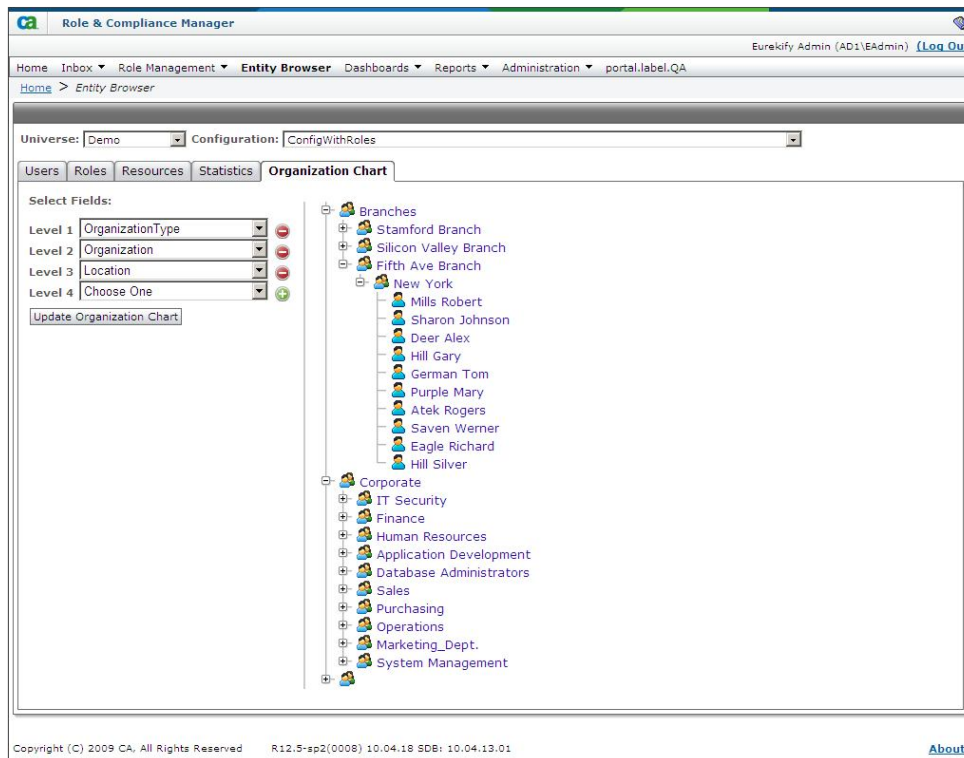
Add a provisioning role **Suggest Provisioning Roles** Copy from a user

Policy Xpress

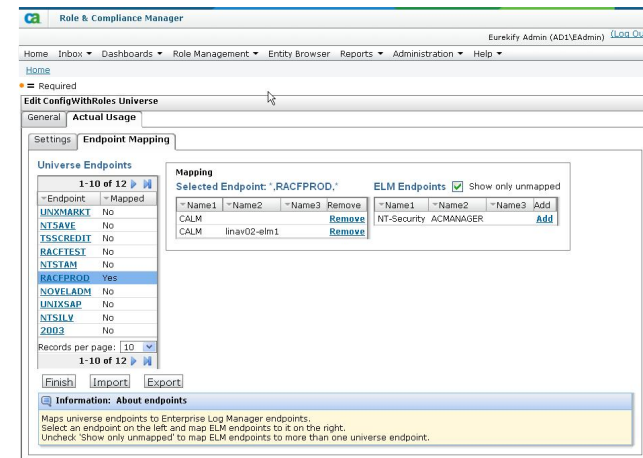
Wizard GUI driven flexible integration without programming

- Value for client
 - Rapidness of the implementation, reduce the implementation time
 - Moving customization from the low level-programming to wizard driven activities/policies generator
 - Reducing the TCO – lower the mandays needed for customization demands.
 - Reduce the need of custom code development ot minimum. Customizations are handled as "policies"
 - Increase of the user friendliness of the solution

RCM GUI enhancements

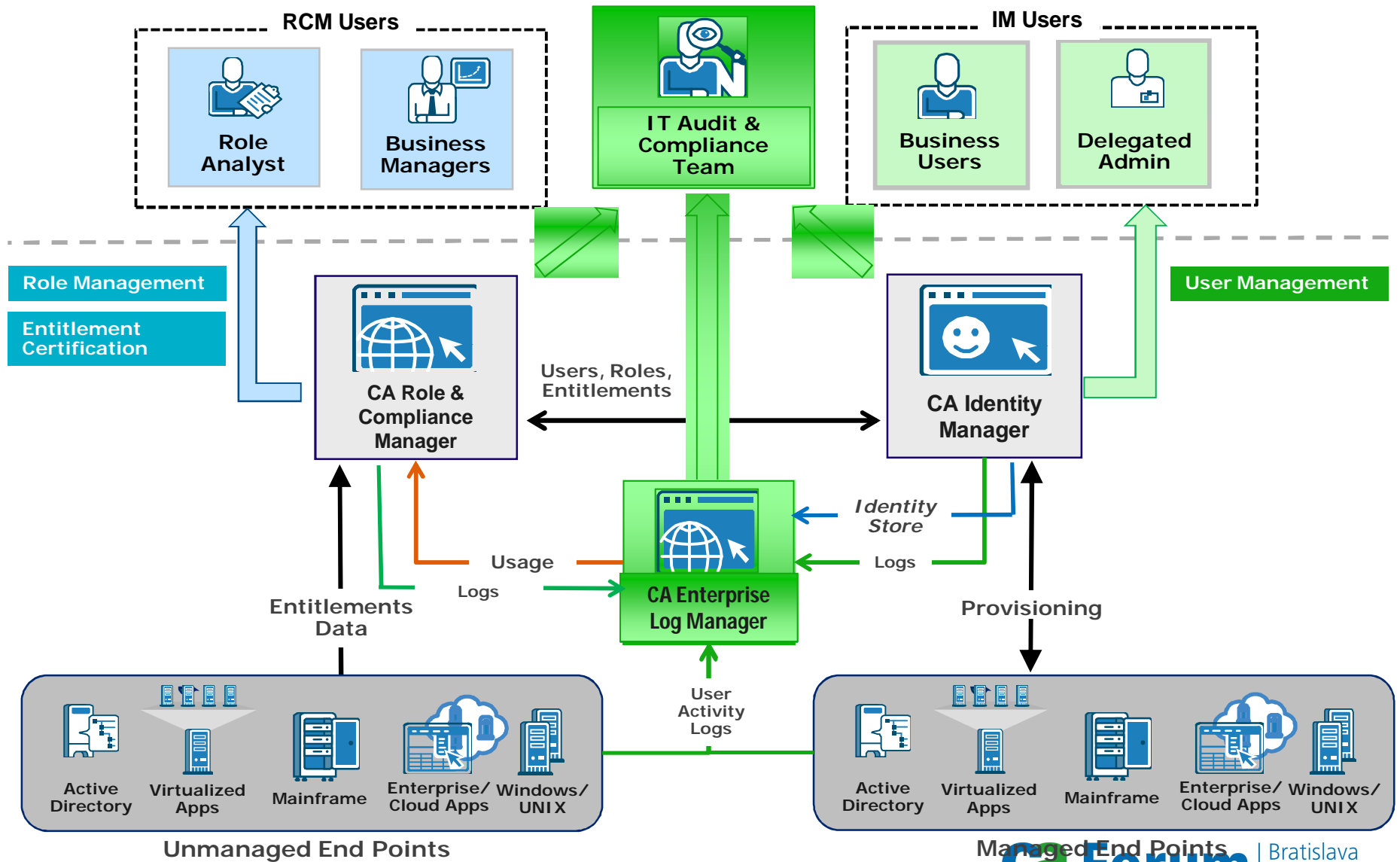


New sneak-peek screenshot



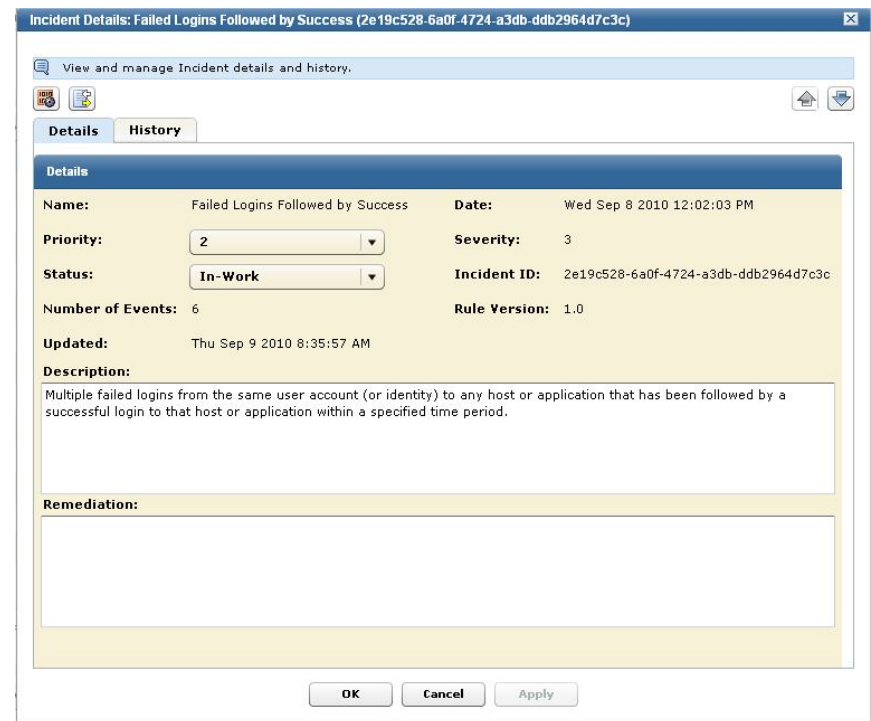
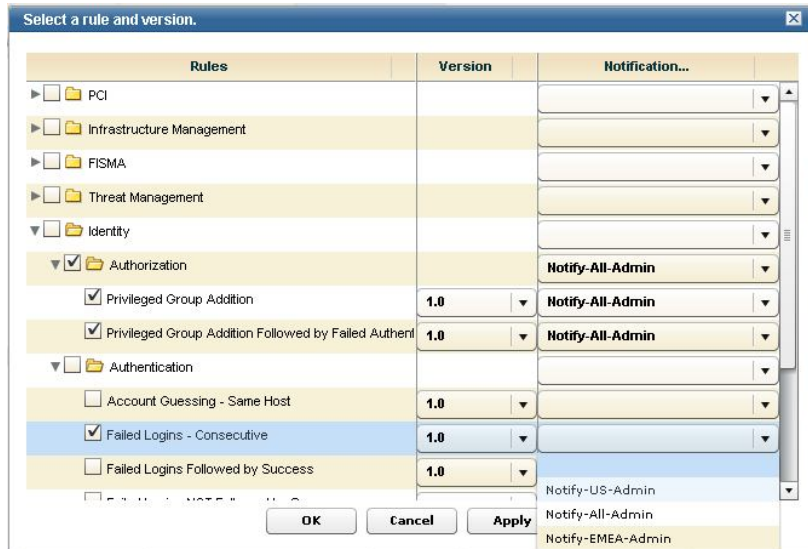
Enterprise Log Manager

ELM



ELM - 12.5 Beta

- Correlation
- Incident Management



AccessControl

CA Solution Overview

UNIX Authentication Broker



- Centralize UNIX Administration
- Active Directory Authentication
- Native Integration with AD

Privileged User Password Manager



- Control Access to Shared Accounts
- Break Glass Access Request
- Accountability of Shared Account Access

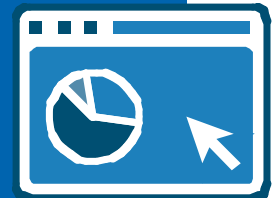
Access Control



- Manage Fine-Grained Access Policies
- Segregation of Duty
- Server Security (Physical/Virtual)
- Auditing Privileged Access

CA ELM (Limited License)

- Centrally Manage Audit Logs
- Compliance Reporting



12.5 SP3 positions Access Control as a PUPM best-of-breed

- PUPM for Applications IDs to Databases
 - Manage passwords of applications using ODBC or JDBC
 - Does not require changes to the applications

The screenshot displays the CA Access Control Enterprise Management web interface in Internet Explorer. The browser address bar shows the URL: `http://aclab:18080/jan/ac/ca12/index.jsp?facesViewId=/app/page/screen/standard_search.jsp`. The interface is logged in as Administrator to ACLABAD(DMS @ ACLABAD). The main menu includes Home, World View, Policy Management, Privileged Accounts, Reports, Users and Groups, and System. The current view is 'Modify Password Consumer: IIS Database Connectivity'. The 'General' tab is active, showing a form to fill in the password consumer details. The form includes fields for Name (IIS Database Connectivity), Description, Consumer Type (Database (ODBC/JDBC/OLEDB/OCI)), and Application Path. There is a checkbox for 'Enabled' with the label 'Accept requests from password consumer'. A 'Submit' button is visible at the bottom right of the form.

Overlaid on the right side of the screenshot is a Notepad window containing the following VB code:

```
File Edit Format View Help
<html><title>LAX Flights</title>
<% Page Language="VB" Debug="true" %>
<% Import Namespace="System.Data" %>
<% Import Namespace="System.Data.Odbc" %>
<script language="VB" runat="server">
  sub Page_Load(sender as Object, e as EventArgs)
    '===== Create a connection string =====
    ' Noticed that there is no need for the hard-coded password
    ' as PUPM Database Password Consumer will replace it.
    '=====
    Dim connstring as String
    connstring = "DRIVER=SQL Server;SERVER=aclab;UID=aspuser;pwd=p12345;DATABASE=aspdemo;LANGUAGE=us_english;"

    'Open a connection
    Dim objconnection as odbcconnection
    objconnection = New odbcconnection(connstring)

    objconnection.Open()

    'specify the SQL string
    Dim strSQL as String = "SELECT * FROM dbo.flights"

    'Create a command object
    Dim objcommand as odbccommand
    objcommand = New odbccommand(strSQL, objconnection)

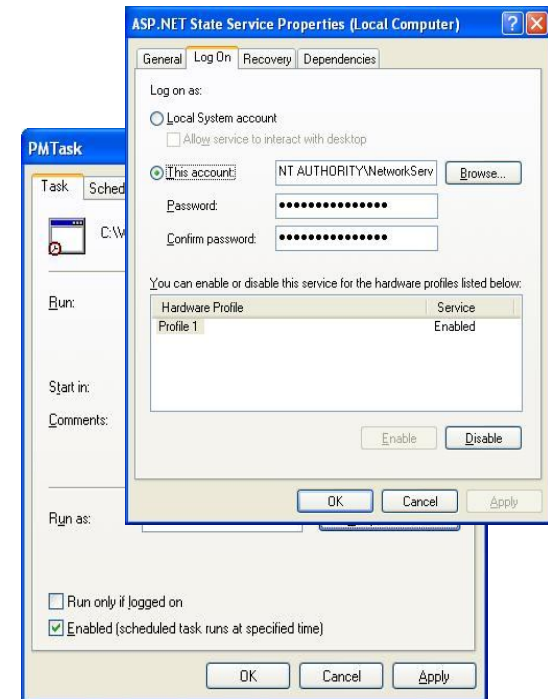
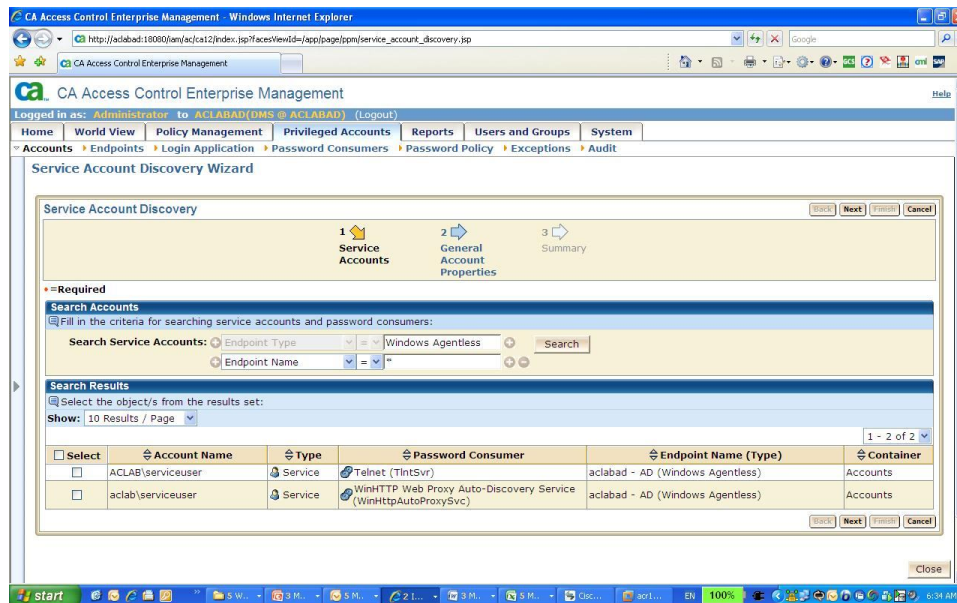
    'Get a datareader
    Dim objdatareader as odbcdatareader
    objdatareader = objcommand.ExecuteReader(CommandBehavior.CloseConnection)

    'do the databinding
    dgResults.DataSource = objdatareader
    dgResults.DataBind()

    'Close the datareader/db connection
    objdatareader.Close()
  end sub
</script>
<asp:DataGrid id="dgResults" runat="server" />
```

12.5 SP3 positions Access Control as a PUPM best-of-breed

- PUPM for Windows Services and Scheduled Tasks IDs
- Agent-less automatic discovery and management with remote WMI



12.5 SP3 positions Access Control as a PUPM best-of-breed

- Automatic login to PUPM
 - Tracking the original ID through advanced AC integration
 - Seamless login to managed systems without exposing the password
 - Session Recording (through 3rd party integration)

Show Details	Account Name	Status	Endpoint Name	Endpoint Type	Actions
Show	Guest		PERRO15-W2K3 Win	Windows Agentless	Actions...
Show	pupm1	Checked Out	PERRO15-W2K3 Win	Windows Agentless	Actions...
Show	Administrator		PERRO15-W2K8 Win	Windows Agentless	Actions...
Show	PowerUser	Checked Out	PERRO15-W2K3 Win	Windows Agentless	Actions...
Hide	RegularUser	Checked Out	PERRO15-W2K3 Win	Windows Agentless	Actions...

Last Checkout Date: 28/04/2010 14:46:03
Last Checkout By: Administrator
Checked-out By: administrator
Container: Accounts
Password Policy: default password policy
Exclusive: false
Checkout:

Show	Administrator		GAD Win2003	Windows Agentless	Actions...
Show	Administrator		PERRO15-W2K3 Win	Windows Agentless	Actions...

12.5 SP3 adds additional enhancements to UNIX security

- Kerberos-based Single Sign On for UNAB
 - Seamless login from or to windows and to other UNIX through Kerberos enabled applications
 - Leverage the native UNIX Kerberos key store
 - Integrates with AD Kerberos
- UNIX Keyboard Logger – AC Trace enhancements
 - Enhanced Trace to record interactive sessions for improved compliance
 - Session summary reports on ELM

thank you