

CA SPECTRUM Infrastructure Manager

What's New in Release 9.2

Martin Adamčík

ca Forum

Bratislava
20. október

Agenda

- New IP Routing Management
- New Report Management Capabilities
- Network Configuration Management Enhancements in r9.2
- Other Enhancements

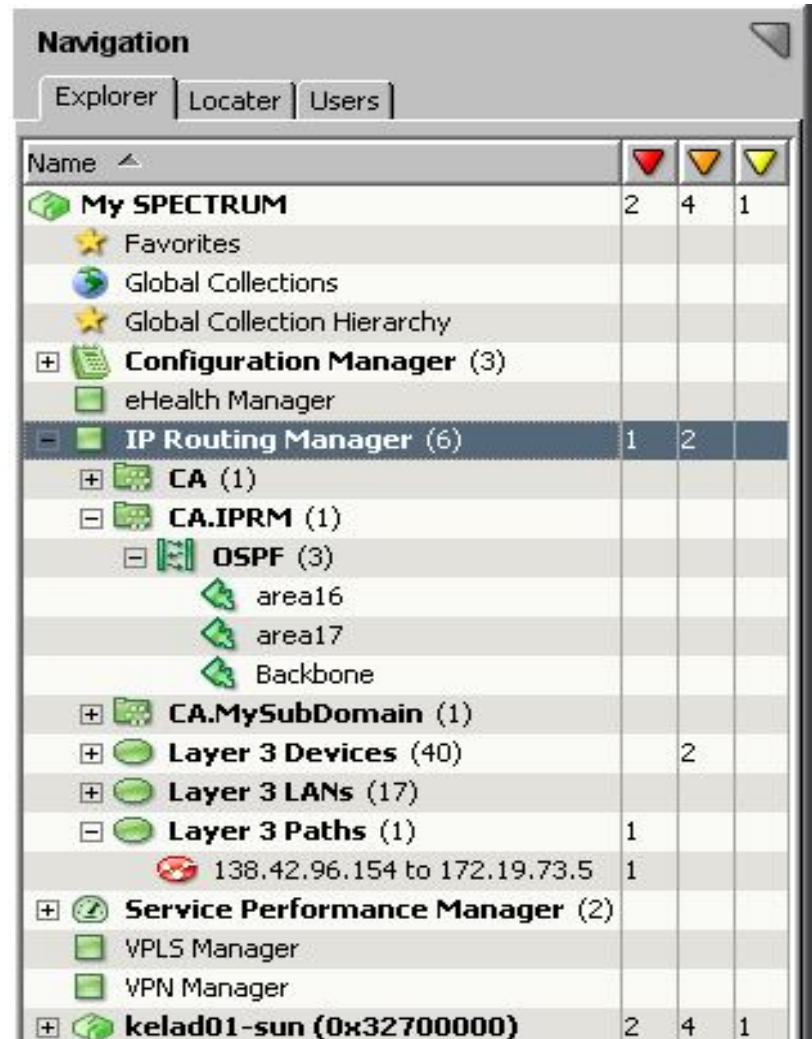
CA Spectrum IP Routing Manager

CA Spectrum IP Routing Manager

- Developed by CA and designed for customers with complex routed environment, e.g. a “must-have” technology for every Service Provider
 - Take the guesswork out of troubleshooting network failures and performance degradation related to routing
 - Configured path does not always equal to the actual path the data takes across the network
 - Use CA Spectrum IP Routing Manager to find out what really happened
- Integrates with third party appliance
 - Packet Design Route Explorer appliance (fully featured) or lower cost Packet Design IP Routing Manager Route Recorder
 - Also compatible with HP Route Analytics Management Software and Juniper Networks Route Insight Manager

CA Spectrum IP Routing Manager

- New CA Spectrum IP Routing Manager
 - All L3 topology and paths listed under IP Routing Manager icon
- Fault tolerant, distributed CA Spectrum deployments are supported
 - Ability to view entire L3 topology across all CA Spectrum landscapes for a single global L3 topology
 - Ability to monitor critical paths across CA Spectrum servers

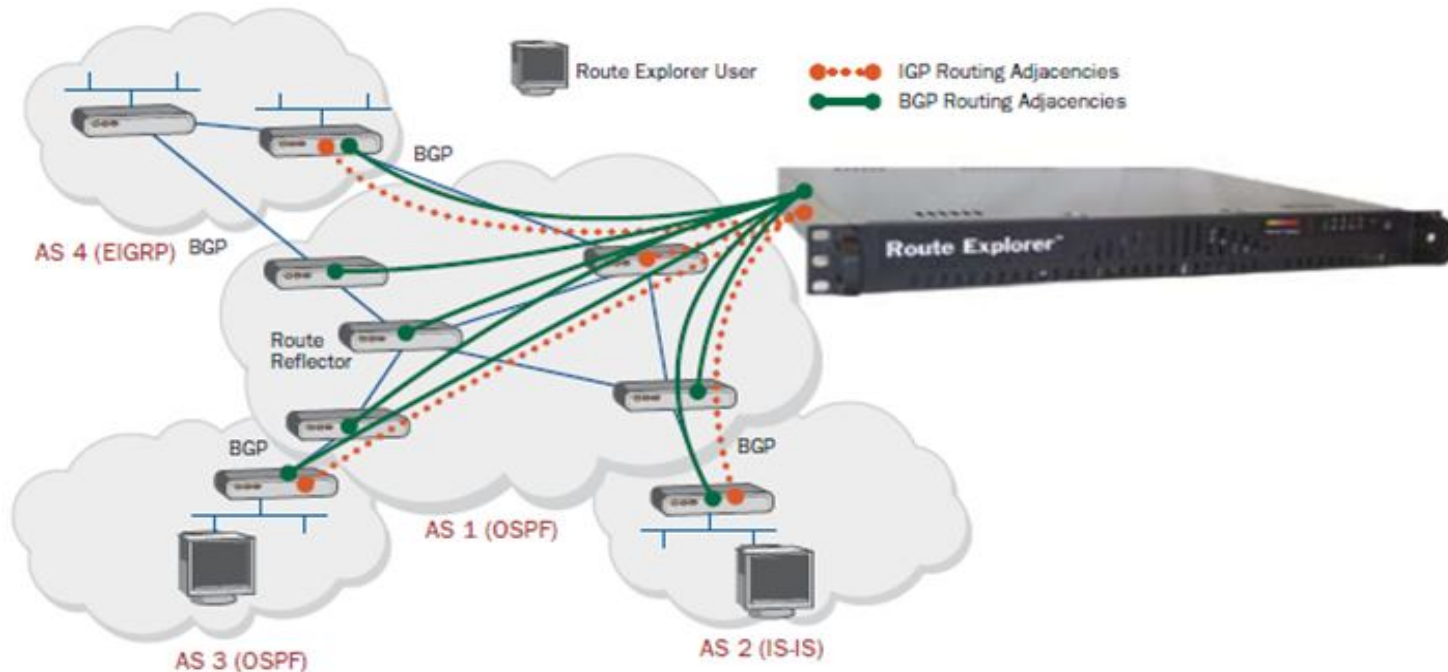


The screenshot shows the 'Navigation' pane of the CA Spectrum IP Routing Manager. It features a tree view of the network configuration. The 'IP Routing Manager (6)' folder is expanded, showing its sub-items: 'CA (1)', 'CA.IPRM (1)', and 'OSPF (3)'. The 'OSPF (3)' folder is further expanded to show 'area16', 'area17', and 'Backbone'. Other visible folders include 'My SPECTRUM', 'Configuration Manager (3)', 'eHealth Manager', 'CA.MySubDomain (1)', 'Layer 3 Devices (40)', 'Layer 3 LANs (17)', 'Layer 3 Paths (1)', 'Service Performance Manager (2)', and 'VPLS Manager'. A table at the bottom of the pane shows counts for each folder.

Name	Red Arrow	Yellow Arrow	Green Arrow
My SPECTRUM	2	4	1
Favorites			
Global Collections			
Global Collection Hierarchy			
Configuration Manager (3)			
eHealth Manager			
IP Routing Manager (6)	1	2	
CA (1)			
CA.IPRM (1)			
OSPF (3)			
area16			
area17			
Backbone			
CA.MySubDomain (1)			
Layer 3 Devices (40)		2	
Layer 3 LANs (17)			
Layer 3 Paths (1)		1	
138.42.96.154 to 172.19.73.5		1	
Service Performance Manager (2)			
VPLS Manager			
VPN Manager			
kelad01-sun (0x32700000)	2	4	1

Packet Design Route Explorer Overview

- A single Packet Design Router Explorer (REX) appliance can concurrently monitor and analyze complex IP networks and multiple routing protocols (OSPF, IS-IS, EIGRP, BGP) and span multiple autonomous systems
- Multiple REX or IP Routing Manager Route Recorder (IPRM RR) appliances can be deployed in a distributed architecture



Other IP Services Management Enhancements

— Key capabilities

- CA Spectrum VPLS Management
 - Support for Juniper-based Metro Ethernet Virtual Private LAN Service (VPLS)
- CA Spectrum Multicast Manager
 - Cisco Rate Counter Support
- CA Spectrum IP Services discovery now integrated with CA Spectrum's core discovery
 - Enables more granular scoping of the discovered environment
 - Example: Only discover specific Multicast or L3 VPN ranges

CA Spectrum Report Manager

New in CA Spectrum Report Manager

- New Self Service Reporting
 - New report authoring application (build your own reports)
 - New CA Spectrum Report Manager database API (published schema)
- New CA Spectrum Manager Report console
- New security-enabled reports

New in CA Spectrum Report Manager

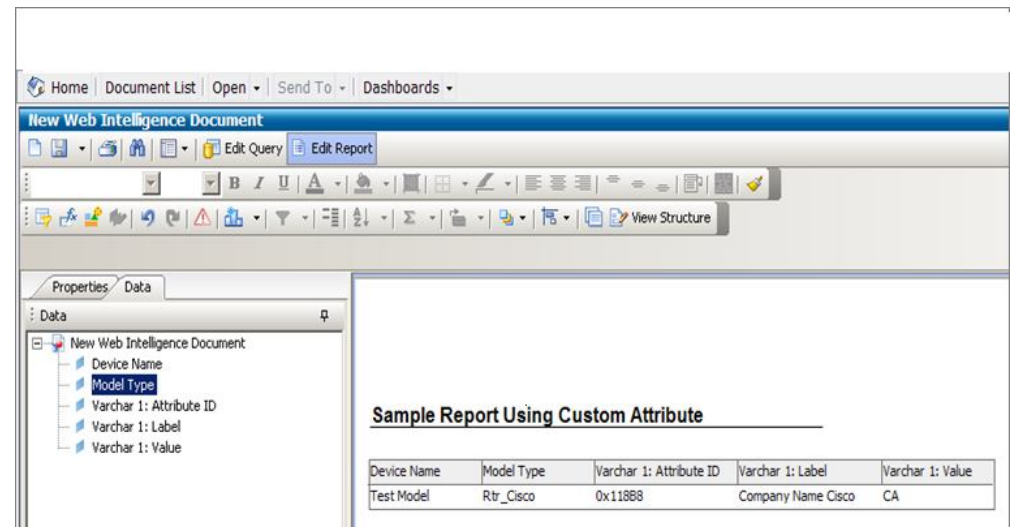
— New architecture improvements

- Ability to deploy Business Objects business intelligence module on its own server, separate from the CA Spectrum OneClick Server
- Can share the Business Objects engine with other CA solutions (e.g. CA eHealth Performance Manager, CA Spectrum Service Assurance, CA Service Desk Manager)
- New support of high volume data management (MySQL 5.0)

CA Spectrum Report Manager “Self-Service”

— CA Spectrum ad hoc reporting via Web Intelligence (WebI) pronounced (“web-e”)

- User-friendly drag & drop report authoring
- Environment supports:
 - Custom selection of data objects
 - Custom formatting (i.e. layout, chart selection, branding)
 - Ad hoc data exploration and analysis
 - Content sharing
 - Access to polled “custom attributes”



CA Spectrum Report Manager “Self-Service”

- CA Spectrum Report Manager database API
 - Fully documented interface (SRMDBAPI) to reporting data
 - Implemented as a set of 20 read-only views into the CA Spectrum Report Manager tables
 - Asset, Alarm, Availability/Outage, Event, etc
 - Environment supports:
 - SQL queries (read-only)
 - Custom selection of data objects
 - “In-Place” reporting
 - Data extractions
 - Access to polled “custom attributes”

CA Spectrum Report Manager “Self-Service”

- New ability to have CA Spectrum Report Manager poll and store attributes not currently polled out-of-the-box
- You can now configure CA Spectrum Report Manager for custom data polling
 - Driven by XML configuration
 - Different customers can poll different attributes
- Custom attribute data is published through new interfaces
 - e.g. CA Spectrum ad-hoc reporting (SRMDBAPI)

Network Configuration Management Enhancements in r9.2

CA Spectrum Network Configuration Manager

— Change Approval

- Integration with CA Service Desk Manager so that changes can be approved before it is implemented

— Change Automation

- Ability to schedule configuration tasks
- Out-of-the-box Cisco IOS firmware uploads

CA Spectrum Network Configuration Manager

— Change Monitoring & Detection

- Configuration captures from additional sources including SysLog messages with correlation of change events
- Ability to identify a reference configuration, track drift and deviations (for compliance) & alarm on violations
- Option to alarm on any change events
- Expanded configuration comparison to include any two configurations

— Change Reporting

- Increased change detail: who, what, where, when & how

CA Spectrum Network Configuration Manager

- Cisco IOS firmware uploads
 - New tasks to automate Cisco IOS firmware updates
 - Support for Cisco IOS/IOS-SSH device families
 - Tasks follow the “firmware upload pipeline” to perform this multi-step operation:
 - Load Firmware
 - Reload Device
 - Cancel Reload request

Upload Firmware Prompt Dialog - SPECTRUM OneClick

Image Information

Firmware Image Name*

Destination

Boot Command

Reload the device after firmware upload

Reload Information

Options

Reload Immediately Warm Copy Config (if modified)

Timing

In

Hours Minutes Month Day

At

Reload Comment

Server Information

Protocol*

Server Address*

Time out (seconds)*

Image Directory

User Name

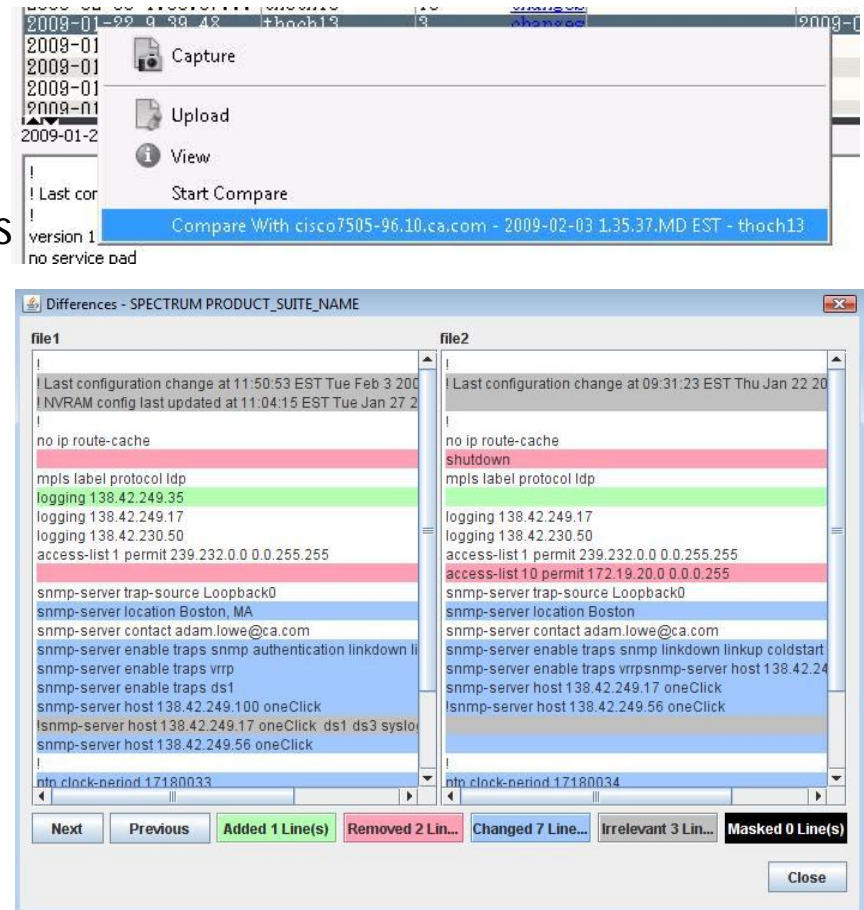
Password

* indicates a required field

OK Cancel

CA Spectrum Network Configuration Manager

- Expanded configuration comparison allows you to compare any two configurations
 - Compare configs across different devices
 - Compare configs across different CA Spectrum servers
 - Leverages right click menu to “start compare”
- Customer Value
 - Provides you with more choices when doing comparisons



CA Spectrum Network Configuration Manager

— Expanded change detection

- Includes SysLog messages with ability to capture:
 - What device has changed?
 - Who made the change?
 - When was it made?
 - How was it made?
 - What changed in configuration file?

— Customer Value

- Provides a single correlated event that includes all change details
- Increases change awareness
- Addresses customer need for increased change detail
- Streamlines information into an easy-to-view format

Other Enhancements

Outage Editor Enhancements

— Simplified Administration

- New “Time Span Search”

Allows the user to retrieve and edit all outages within a given time frame
Supports editing of multiple outages simultaneously

The screenshot shows the SPECTRUM OneClick console interface. The main content area is titled "Outage Editor - Outage Listing". It features a search bar with the text "Enter a time range to filter the outage list:" and a "Find Outages" button. Below the search bar, there are controls for "Modify the selected entries", including a "Set selected notes" button and a "Set selected types" button. A table of outage entries is displayed below, with columns for Name, Start Time, End Time, Outage Type, and Notes. The table contains four rows of data, each representing an ongoing outage. A red circle highlights the search bar and the table, and a blue arrow points from the text on the left to the search bar.

Name	Start Time	End Time	Outage Type	Notes
Service Resource 1_et.15.30	07/15/2009 05:58:28 PM	Ongoing (End Now)	Unplanned	
Service Resource 1_et.15.23	07/15/2009 05:58:28 PM	Ongoing (End Now)	Unplanned	
Service Resource 1_gl.9.1	07/15/2009 05:58:28 PM	Ongoing (End Now)	Unplanned	
Service Resource 1_et.15.13	07/15/2009 05:58:28 PM	Ongoing (End Now)	Unplanned	

Outage Editor Enhancements

- Set the outage type and notes to multiple outages at once

Modify the selected entries:

Outages exempted by PJM

Exempt

Modify the selected entries:

- Select Type -

Page 1 2 3 4 5 6 7 8 9 10 11

<input type="checkbox"/>	Name	Start Time	End Time	Outage Type	Notes
<input type="checkbox"/>	Service Resource 1_et.15.30	07/15/2009 05:58:28 PM	Ongoing (End Now)	Exempt	Outages exempted by PJM
<input type="checkbox"/>	Service Resource 1_et.15.23	07/15/2009 05:58:28 PM	Ongoing (End Now)	Exempt	Outages exempted by PJM
<input type="checkbox"/>	Service Resource 1_gi.9.1	07/15/2009 05:58:28 PM	Ongoing (End Now)	Exempt	Outages exempted by PJM
<input type="checkbox"/>	Service Resource 1_et.15.13	07/15/2009 05:58:28 PM	Ongoing (End Now)	Exempt	Outages exempted by PJM

Enhanced User Security

- Delivers “data-level security” to CA Spectrum reports
- User’s report now only contains data that they have been given access to
 - Utilizes OneClick’s security infrastructure
 - If you don’t have access to “Router A”, you can’t report on “Router A”
- Security is applicable to
 - Existing cut-of-the-box “canned” reports
 - New ad hoc WebI reports
- Security is “OFF” by default to be backwardly compatible
 - Must be enabled by the administrator after r9.2 installed

OneClick Enhancements

— Key Features

- Dynamic Global Collections
- Increased visibility for chassis-based devices
 - New “Chassis” tab that lists modules & interfaces
 - Includes enhanced fault isolation
- Increased visibility for CA Spectrum Service Performance Manager
 - New OneClick visibility, expanded ability to assert alarms, improved test scheduling
- Improved searches (relational searches)

Core Enhancements

— Key Features

- Auto-discovery enhancements
 - Integrating IP Services discovery with core discovery
 - Link Layer Discovery Protocol (LLDP) support
- Continued support of new/updated device certifications
 - RIM BlackBerry Enterprise Server
 - Support of Cisco Nexus 1000V, Cisco UCS
- Increase out of the box support for standard RFCs
 - Support for 10 new RFCs including Power over Ethernet support
- Policy Manager graphical user interface

Core Enhancements

— Key Features

- Alarm synchronization for enhanced fault tolerant operations
- Self-certifications enhancements
 - Device conversion to address device conflict resolutions
 - Device Type & Model Class expansion to give customers flexibility in device naming & model classifications
 - Ability for an administrator to assign a normalized CPU & memory attribute
- Official support for Windows 7 (OneClick clients only)

thank you